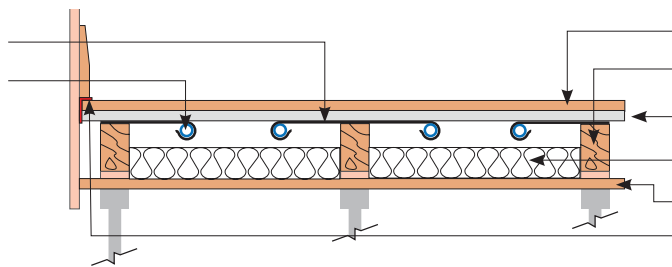


ATAK14 – 14mm Fastflo™ with Clippaplate™ in an acoustic floor with Knauf board*

May be used with Robust Detail E-FT-01, 02, 03 & E-FS-02.

Supplied by Nu-Heat

Nu-Heat ClippaPlate™
14mm Fastflo™ tubing



Supplied by others

Floor deck
Resilient batten/saddle system
Knauf board*
Mineral wool insulation
Structural deck
Knauf perimeter insulation strip

* Can be purchased from Nu-Heat

FLOOR HEATING TUBE

Nu-Heat's 14mm Fastflo™ tubing is extremely flexible which means that it can easily be installed around the numerous turns typical to any design. The use of multiple, shorter Fastflo™ coils within each temperature control zone means the tubing is installed at closer centres, suitable even for low temperature heat sources (e.g. heat pumps).

INSULATION

25mm mineral wool quilt should be placed between the battens to offset downward heat transmission complying to the requirements of Part L of Building Regulation.

Alternatively, if mineral wool is installed between the joists for acoustic reasons, the uppermost mineral wool layer is not required.

ACOUSTIC BRIDGING

It is important that there is no contact between any elements of the underfloor heating or deck and the structural floor. Ensure that all loose Fastflo™ pipework is either fixed to the battens using the nail clips provided, or it is seated on mineral wool.

RESILIENT BATTENS / SADDLE SYSTEM

The system must be installed according to the manufacturer's instructions. Use their proprietary resilient acoustic flanking strip around the perimeter of the room.

www.nu-heat.co.uk/floorspecs

KNAUF BOARD

Knauf board is a gypsum-based composite that is capable of withstanding the temperatures involved in underfloor heating. It offers significant benefit over chipboard both acoustically and in terms of quality feeling of the floor due to its greater density. More importantly for underfloor heating it is more conductive which enables an increased heat output.

If for any reason you choose not to use Knauf board please inform Nu-Heat, as it will affect the underfloor heating design.

FLOOR COVERINGS

Tiles, stone and thin laminates offer benefits such as improved response time and higher heat output. A quality flexible tiling adhesive must be used for fixing floor tiles. Carpets can be used but the Tog value, when combined with performance underlay should be no greater than 2.5. If the system is powered by a heat pump greater restrictions apply. Natural timber with a low moisture content can be used when care is taken to properly acclimatise the wood by following manufacturers' instructions.

WARRANTIES/INSURANCE

Manufacturer's warranty: all UFH tube supplied by Nu-Heat is covered by a 50-year warranty, the first 10 years of which are insurance-backed.

Product liability: Nu-Heat maintains product liability insurance to £5 million.

Professional indemnity: As Nu-Heat's design service is integral to the operational effectiveness of the UFH system, the company holds professional indemnity insurance of £5 million to cover all aspects of our consultation and design services.