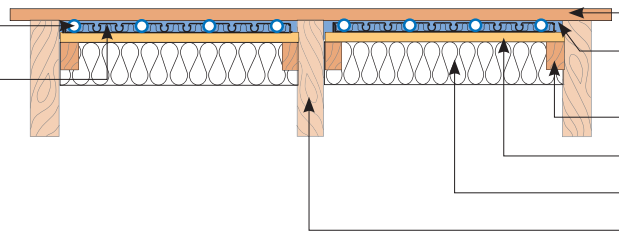


TS14 – 14mm Fastflo™ in a suspended timber floor with screed assist

Supplied by Nu-Heat

14mm Fastflo™ tubing
Nu-Heat Cliptrack



Supplied by others

22mm chipboard deck
20mm biscuit-mix sand & cement screed
50 x 25mm timber battens
12mm plywood or similar
100mm(min) mineral wool
Timber joist

FLOOR HEATING TUBE

Nu-Heat's 14mm Fastflo™ tubing is extremely flexible which means that it can easily be installed around the numerous turns typical to any design. The use of multiple, shorter Fastflo™ coils within each temperature control zone means the tubing is installed at closer centres to ensure a more even heat distribution.

INSULATION

100mm thick mineral wool should be placed into the joist void. This is a requirement of Building Regulations Part E for internal floors, to provide acoustic deadening.

For ground floors or floors over unheated areas, at least 150mm of mineral wool should be present in the void.

Part L of the Building Regulations may require thicker insulation to be used. Check with your architect.

FLOOR STRUCTURE

Screed density varies between 1200 and 2100 kg/m³.
Joists must be correctly sized to accept the extra loading.
If in doubt, please consult a structural engineer.

FLOOR COVERINGS

Tiles, stone and thin laminates offer benefits such as improved response time and higher heat output. Carpets can be used but the Tog value when combined with performance underlay should be no greater than 2.5. If the system is powered by a heat pump greater restrictions apply. Natural timber with a low moisture content can be used, but care must be taken to properly acclimatise the wood by following manufacturers' instructions.

WARRANTIES/INSURANCE

Manufacturer's warranty: all UFH tube supplied by Nu-Heat is covered by a 50-year warranty, the first 10 years of which are insurance-backed.

Product liability: Nu-Heat maintains product liability insurance to £5 million.

Professional indemnity: As Nu-Heat's design service is integral to the operational effectiveness of the UFH system, the company holds professional indemnity insurance of £5 million to cover all aspects of our consultation and design services.

