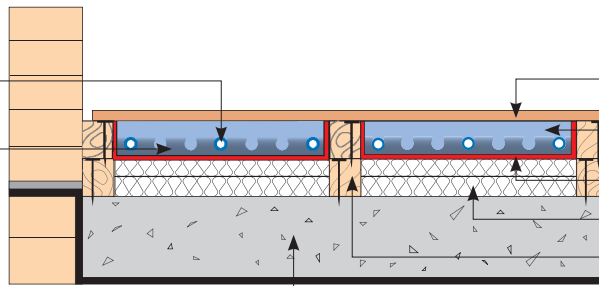


## SCB14 – 14mm Fastflo™ in screed with Cliptrack

### Supplied by Nu-Heat

14mm Fastflo™ tubing

Cliptrack



### Supplied by others

Timber deck

Screed

125–250µm polythene protection layer

Insulation

Supporting battens

Concrete slab

### FLOOR HEATING TUBE

Nu-Heat's 14mm Fastflo™ tubing is extremely flexible which means that it can easily be installed around the numerous turns typical to any design. The use of multiple, shorter Fastflo™ coils within each temperature control zone means the tubing is installed at closer centres, suitable even for low temperature heat sources such as heat pumps.

### INSULATION

In ground floors the insulation beneath the screed should be 70mm 'Celotex' or equivalent, or conform to Part L of the Building Regulations; whichever is greater.

In upper floors insulation should be to a minimum of 30mm 'Celotex' or equivalent to prevent downward heat transmission. Edge insulation should meet current Building Regulations. These materials and the polythene protection layer are standard and are most economically sourced from local builders' merchants.

### FLOOR STRUCTURE

**Screed:** Standard 25-75mm deep sand and cement screed should be used at the ratio of 4 parts sand to 1 part cement. Care should be taken to ensure good contact between the underfloor heating tubes and the screed. It is important that the screed is as dense and consistent as possible to aid heat transfer. The screed must be sufficiently dry before coverings are applied.

**Battens:** Battens should be spaced according to the final floor deck manufacturer's instructions.

### FLOOR COVERINGS

Tiles, stone and thin laminates offer benefits such as improved response time and higher heat output. Carpets can be used but the Tog value, when combined with performance underlay should be no greater than 2.5. If the system is powered by a heat pump, greater restrictions apply. Natural timber with a low moisture content can be used, but care must be taken to properly acclimatise the wood by following manufacturers' instructions.

### WARRANTIES/INSURANCE

**Manufacturer's warranty:** all UFH tube supplied by Nu-Heat is covered by a 50-year warranty, the first 10 years of which are insurance-backed.

**Product liability:** Nu-Heat maintains product liability insurance to £5 million.

**Professional indemnity:** As Nu-Heat's design service is integral to the operational effectiveness of the UFH system, the company holds professional indemnity insurance of £5 million to cover all aspects of our consultation and design services.

