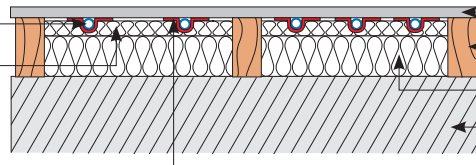


## DPBK14 – 14mm Fastflo™ in low-profile diffuser panels installed between battens, with Knauf board

### Supplied by Nu-Heat

14mm Fastflo™ tubing  
Nu-Heat TriPanel –  
25mm EHD polystyrene  
Heat transfer plates



### Supplied by others

Knauf board\*  
Supporting battens fixed to sub-deck  
Floor insulation  
Floor structure (concrete or timber)

\* Can be purchased from Nu-Heat

### FLOOR HEATING TUBE

Nu-Heat's 14mm Fastflo™ tubing is extremely flexible which means that it can easily be installed around the numerous turns typical to any design. The use of multiple, shorter Fastflo™ coils within each temperature control zone means the tubing is installed at closer centres to ensure a more even heat distribution.

### KNAUF BOARD

Knauf board is a gypsum-based composite that is capable of withstanding the temperatures involved in underfloor heating. It offers significant benefit over chipboard both acoustically (because of its greater density) and in terms of thermal output due to its better conductivity.

If for any reason you choose not to use Knauf board please inform Nu-Heat, as it will affect the underfloor heating design.

### INSULATION

For concrete sub floors, or timber floors where insulation must sit above the deck, a minimum of 70mm 'celotex' or equivalent (or to building regulations Part L; whichever is greater) should be present below the diffuser panels.

### FLOOR COVERINGS

Tiles, stone and thin laminates offer benefits such as improved response time and higher heat output. Carpets can be used but the Tog value, when combined with performance underlay should be no greater than 2.5. If the system is powered by a heat pump greater restrictions apply.

Natural timber with a low moisture content can be used when care is taken to properly acclimatise the wood by following manufacturers' instructions.

Natural stone finishes may require thicker Knauf layer; please contact Nu-Heat for advice.

### WARRANTIES/INSURANCE

**Manufacturer's warranty:** all UFH tube supplied by Nu-Heat is covered by a 50-year warranty, the first 10 years of which are insurance-backed.

**Product liability:** Nu-Heat maintains product liability insurance to £5 million.

**Professional indemnity:** As Nu-Heat's design service is integral to the operational effectiveness of the UFH system, the company holds professional indemnity insurance of £5 million to cover all aspects of our consultation and design services.

