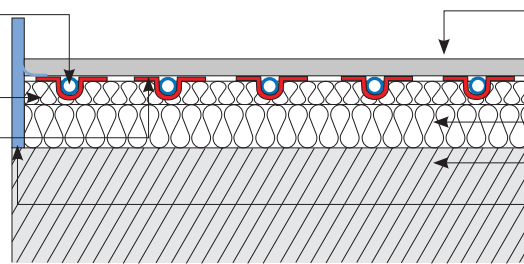


DPFK14 – 14mm Fastflo™ in low-profile diffuser panels with Knauf board*

Supplied by Nu-Heat

14mm Fastflo™ tubing
Nu-Heat TriPanel –
25mm EHD polystyrene
Heat transfer plates



Supplied by others

Knauf board*
Base layer of insulation
Sub-floor (concrete or timber deck)
Edge insulation

* Can be purchased from Nu-Heat

FLOOR HEATING TUBE

Nu-Heat's 14mm Fastflo™ tubing is extremely flexible which means that it can easily be installed around the numerous turns typical to any design. The use of multiple, shorter Fastflo™ coils within each temperature control zone means the tubing is installed at closer centres to ensure a more even heat distribution.

NU-HEAT TRIPANEL

Nu-Heat TriPanel™ is a high quality pre-moulded and versatile product designed to allow three tube spacings – 115mm, 175mm and 230mm. Dimensions: 1400mm x 700mm x 25mm.

SUB-FLOOR

If the floor is to be tiled, it's important that the underlying sub-floor is flat and level to at least SR2 standard (5mm deviation over 3 metres) so that deflection is minimised.

INSULATION

In all cases, the insulation installed below the panel must have a compressive strength higher than 140kPa. Suitable products include PIR/PUR (polyurethane) boards such as Kingspan and Celotex. XPS (extruded polystyrene) boards including Polyfoam, Styrofoam and Yelofoam are also suitable. Expanded polystyrene is not suitable. The thickness of the insulation is dependent on Part L of building regulations, which can vary. Nu-Heat normally recommends 70mm PIR/XPS board.

KNAUF BOARD

Knauf board is a gypsum-based composite that is capable of withstanding the temperatures involved in underfloor heating. It offers significant benefit over chipboard both acoustically and in terms of the quality feeling of the floor due to its greater density. More importantly for underfloor heating it is more conductive which enables an increased heat output.

If for any reason you choose not to use Knauf board please inform Nu-Heat, as it will affect the underfloor heating design.

FLOOR COVERINGS

Tiles, stone and thin laminates offer benefits such as improved response time and higher heat output. A quality flexible tiling adhesive must be used for fixing floor tiles. Carpets can be used but the Tog value when combined with performance underlay should be no greater than 2.5. If the system is powered by a heat pump greater restrictions apply. Natural timber with a low moisture content can be used, but care must be taken to properly acclimatise the wood by following manufacturers' instructions.

WARRANTIES/INSURANCE

Manufacturer's warranty: all UFH tube supplied by Nu-Heat is covered by a 50-year warranty, the first 10 years of which are insurance-backed.

Product liability: Nu-Heat maintains product liability insurance to £5 million.

Professional indemnity: As Nu-Heat's design service is integral to the operational effectiveness of the UFH system, the company holds professional indemnity insurance of £5 million to cover all aspects of our consultation and design services.

