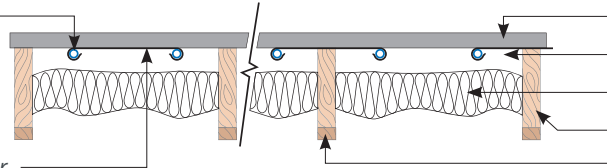


TPBAK14 – 14mm Fastflo™ in a suspended timber floor with Nu-Heat ClippaPlate™ and Knauf board

Supplied by Nu-Heat

14mm Fastflo™ tubing

Nu-Heat ClippaPlate™ fitted *either* between joists *or* over joists



Supplied by others

Knauf board*

20–50mm air gap

100mm mineral wool insulation

Suspended timber floor joists

Optional batten to allow tubing to pass under joists

* Can be purchased from Nu-Heat

FLOOR HEATING TUBE

Nu-Heat's 14mm Fastflo™ tubing is extremely flexible which means that it can easily be installed around the numerous turns typical to any design. The use of multiple, shorter Fastflo™ coils within each temperature control zone means the tubing is installed at closer centres to ensure a more even heat distribution.

KNAUF BOARD

Knauf board is a gypsum-based composite capable of withstanding the temperatures involved in underfloor heating. It offers significant benefit over chipboard both acoustically and in terms of the quality feeling of the floor due to its greater density. More importantly for underfloor heating it is more conductive which enables an increased heat output.

If for any reason you choose not to use Knauf board please inform Nu-Heat, as it will affect the underfloor heating design.

INSULATION

Part E of the Building Regulations requires a minimum of 100mm mineral wool insulation in separating floors for acoustic reasons. 150mm 'Space Blanket', available from DIY stores, enables virtually dust free installation.

FLOOR STRUCTURE

Joist notching: All joist notching must be in accordance with the relevant Building Regulations. Notching should be carried out before laying the chipboard deck.

Note: Battens can be fitted below the joist if notching is not acceptable – see diagram above.

Note: 600mm centres require two plates in each joist bay.

FLOOR COVERINGS

Tiles, stone and thin laminates offer benefits such as improved response time and higher heat output. Carpets can be used but the Tog value when combined with performance underlay should be no greater than 2.5. If the system is powered by a heat pump greater restrictions apply. Natural timber with a low moisture content can be used, but care must be taken to properly acclimatise the wood by following manufacturers' instructions.

WARRANTIES/INSURANCE

Manufacturer's warranty: all UFH tube supplied by Nu-Heat is covered by a 50-year warranty, the first 10 years of which are insurance-backed.

Product liability: Nu-Heat maintains product liability insurance to £5 million.

Professional indemnity: As Nu-Heat's design service is integral to the operational effectiveness of the UFH system, the company holds professional indemnity insurance of £5 million to cover all aspects of our consultation and design services.

