

Floor installation instructions

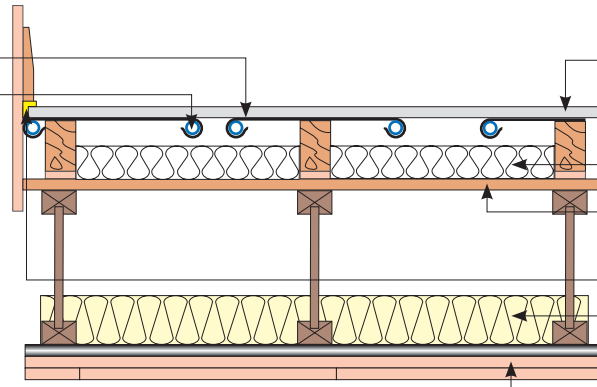
AKA14 – 14mm Fastflo™ with ClippaPlate™ in a resilient batten floor with Knauf board

Supplied by Nu-Heat

Nu-Heat ClippaPlate™
14mm Fastflo™ tubing

Supplied by others

Resilient batten/saddle system
25mm Knauf board*
Mineral wool insulation
Structural deck
Knauf perimeter flanking strip
100mm insulation
Resilient bar
2 layers plasterboard



If for any reason you choose not to use Knauf board please inform Nu-Heat, as it will affect the underfloor heating design.

* Can be purchased from Nu-Heat

TECHNICAL INFORMATION

Insulation

25mm mineral wool quilt should be placed between the battens to offset downward heat transmission complying to the requirements of Part L of Building Regulation.

Resilient battens / saddle system

The system must be installed according to the manufacturer's instructions. Use their proprietary resilient acoustic flanking strip around the perimeter of the room.

Acoustic bridging

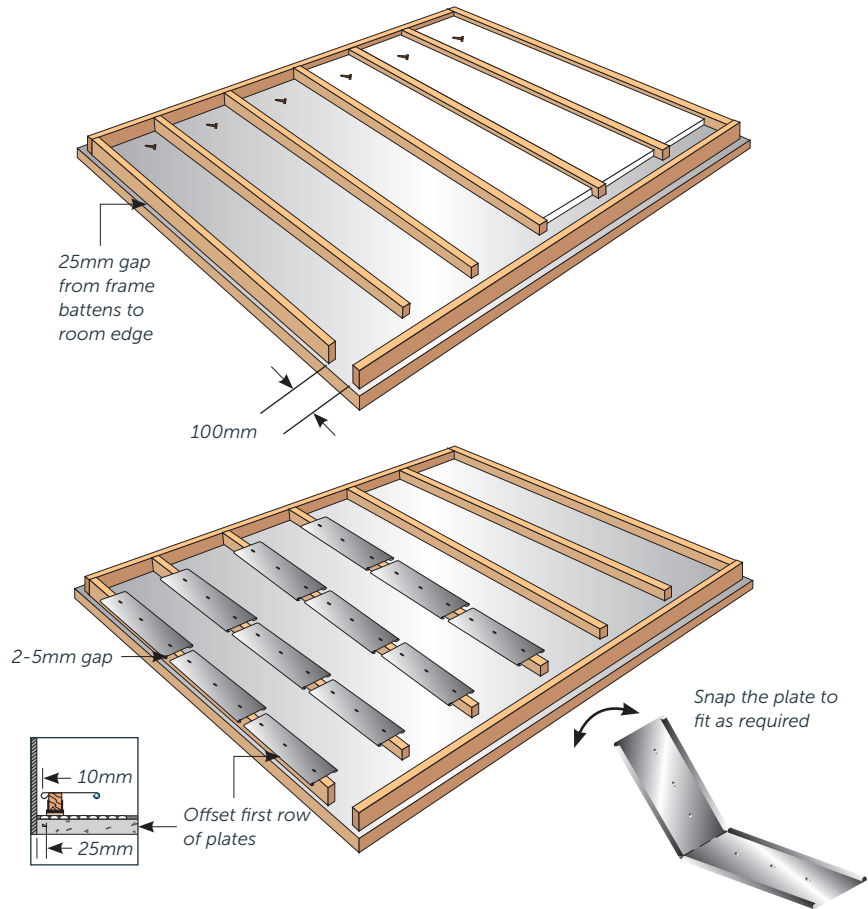
It is important that there is no contact between any elements of the underfloor heating or deck and the structural floor. Ensure that all loose Fastflo™ pipework is either fixed to the battens using the nail clips provided, or it is seated on mineral wool.

Floor structure

When fixing floor tiles a quality flexible tiling adhesive must be used.

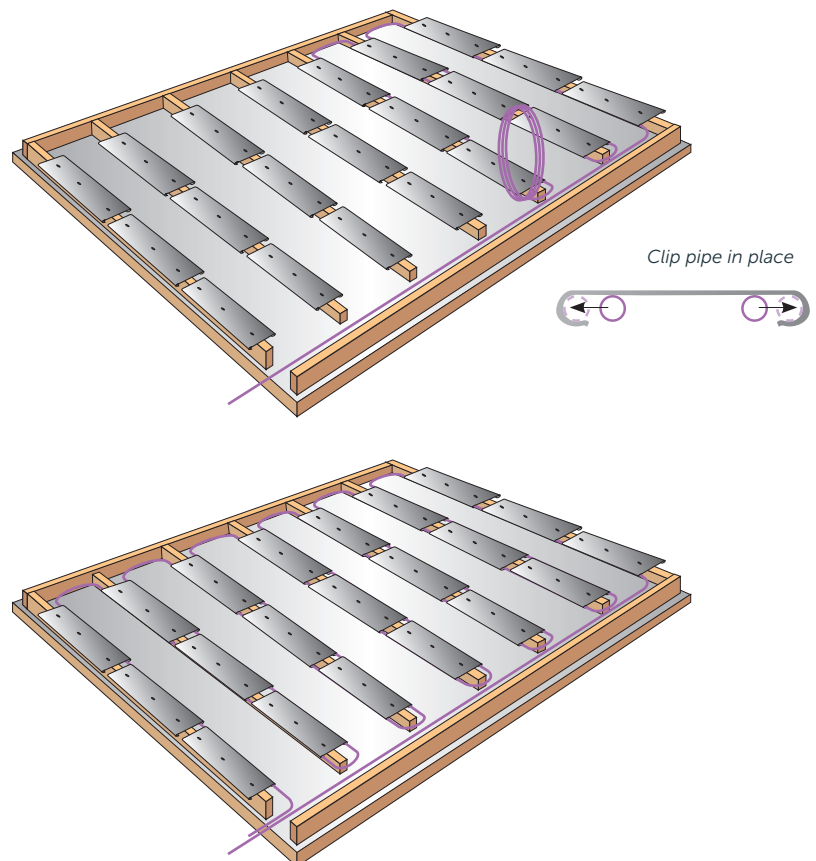
SEQUENCE OF CONSTRUCTING THE FLOOR

- 1 From the upper OSB surface, lay out the acoustic battens across the room at 400mm centres leaving clearances as illustrated here. Insert mineral wool layer between battens if required.
- 2 Install ClippaPlate™ over the battens fixing in place at either end with screws supplied. Ensure that the fixing does not raise the profile of the plates as this can prevent the overlying deck from contacting properly with the plate. Ensure the ClippaPlate™ is fixed in place approximately 100mm from the end of the batten. Leave approx. 2-5mm gap between each plate. Offset the plates at the edge of the room.

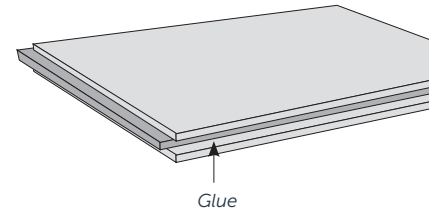
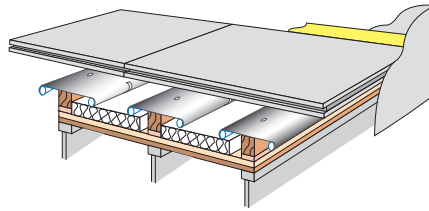
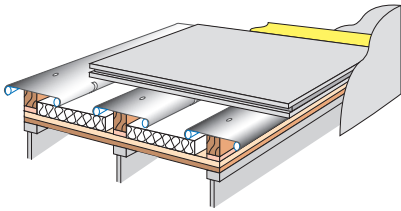


SEQUENCE OF LAYING THE 14MM FASTFLO TUBING IN THE FLOOR

- 3 Install Fastflo™ pipe following your specific CAD layout. Starting at the batten farthest from the manifold, installer A holds the pipe coil and feeds a loop between the first 2 rows of plates to installer B. Installer B takes the loop to the end of the bay and clips it either side and below both rows of ClippaPlate™.
- 4 Use plastic clips to retain pipework at the ends of the bay as required.
- 5 Follow this procedure for all plated battens across the room.
- 6 It is possible for multiple room coils to be fed by larger bore flow and return pipework, attached at forked couplings. This method can simplify installation. The two coils must be of equal length.



INSTALLING THE KNAUF BOARD



- 7** Install Knauf 12mmx100mm flanking strip around the floor perimeter.

It is important that none of the ClippaPlate™ fixings are allowed to protrude above the level of the plate. The Knauf board should be installed printed side upward. Any board edges next to walls need to have the rebate removed. The boards can be cut using a jigsaw or circular saw.

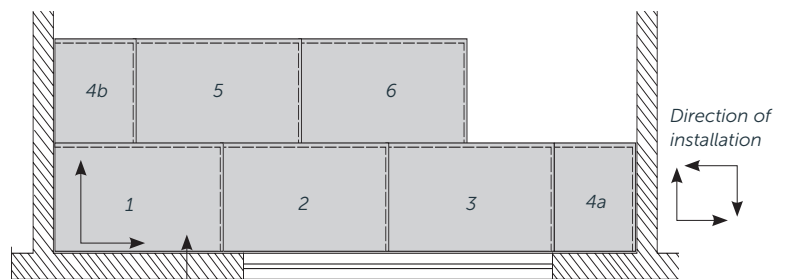
- 8** Take the first board with the printed side upwards and remove the overhang from one edge and one end. Place this board in the first corner, across the battens.

- 9** Cut the overhang from the long edge on the next board so that it will fit against the wall. Apply two parallel beads of Knauf Rebate Glue ("Knauf Falzkleber") to the first board. Fit the second board and ensure that it is butted to the first board as closely as possible.

- 10** Continue across the room gluing each joint, trimming the last board to fit. The off cut from this last board will start the next row (pieces of less than 200mm/8" should not be used).

- 11** Continue laying across the floor. The joints in both the Knauf board should be staggered – see following diagram.

Note: when the flooring passes through doorways the board should be cut to form a continuous section through the doorway. The board should be supported adequately by acoustic battens.



Install Knauf board from the far right corner. Use remaining pieces as beginning of the next row.